

AK500 Pro Feature:

1. Faster and safer to write MCU.
2. **Internal Benz original factory key generator.**
3. Support NEC fast renew, Motorola MCU safe read and write.
4. Support infrared read and write NEC key and Motorola MCU key.
5. Support Benz read and write **"Key-less go" Key.**(Only this machine support)
6. Support through OBD port active Key-less function.
7. Key test function: more easier to test key and EIS(ESL).
8. Support ESL fast unlock, no need 32G database.
9. Support through OBD read and write SBC data, easier for change SBC control unit.

Does AK500PRO support Mercedes Benz W204 after 2008?

Answer: so far AK500PRO doesn't support NEC eeprom key programming, but support AK500pro NEC eeprom key calculation.

W204 is with NEC eeprom, therefore AK500pro neither supports W204 nor supports the following Mercedes Benz models:

w204/w207/w221/w218 and W164 after 2008 year which EIS model CPU is NEC.

Important Notice on KEYLESS GO function

If you want to use KEYLESS GO function: the key used to make key must be **new and blank key**, it can't be used key. New key must be as the **same type and frequency as the original keyless go key**. Otherwise it will cannot support keyless go function.

AK500 do ESL: read out original ESL data, generate new key data, write new data .binw back to ESL(now must use that 32GB hard disk database then can renew ESL)

When you deal W203 ECU, if your ECU is simens, it do not have eeprom. Resolution: Read flash of ecu, then make renew. Then use MB STAR to do doing.

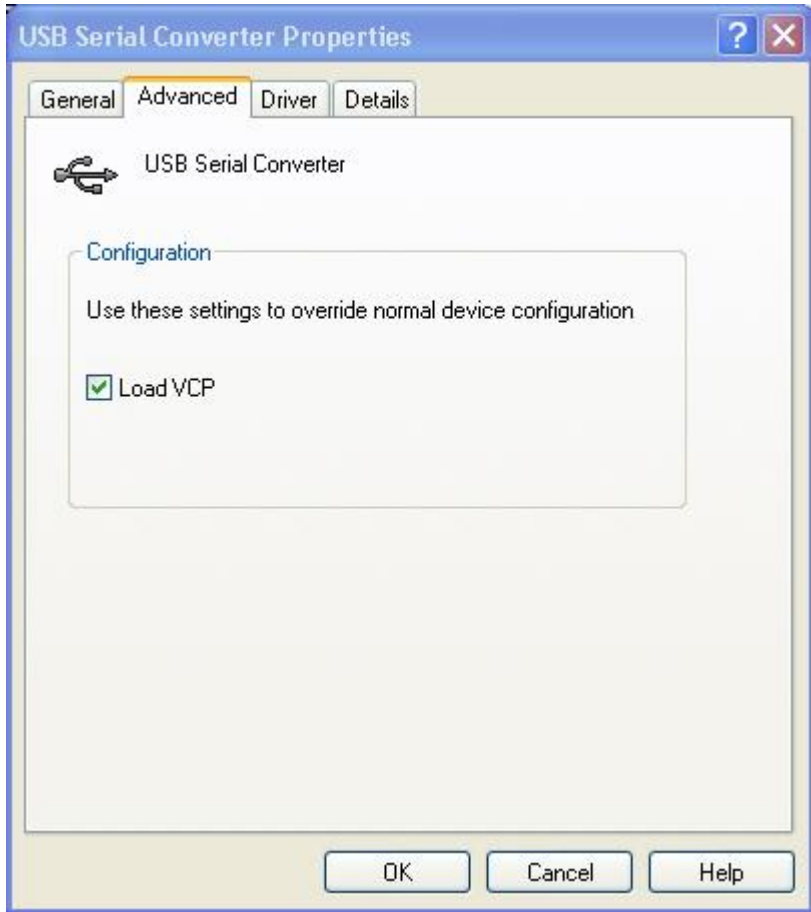
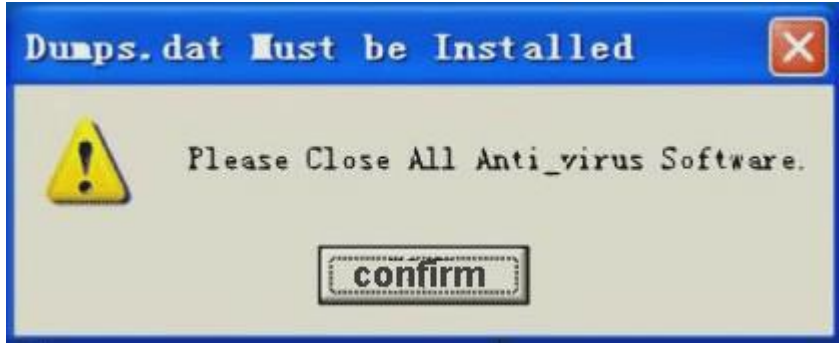
AK500PRO can write keyless go key. **But you must write via IR**(Your keyless go key must be completely new or blank. If your key is old, it can read out date, then it can not be write again, you must renew it then can write).

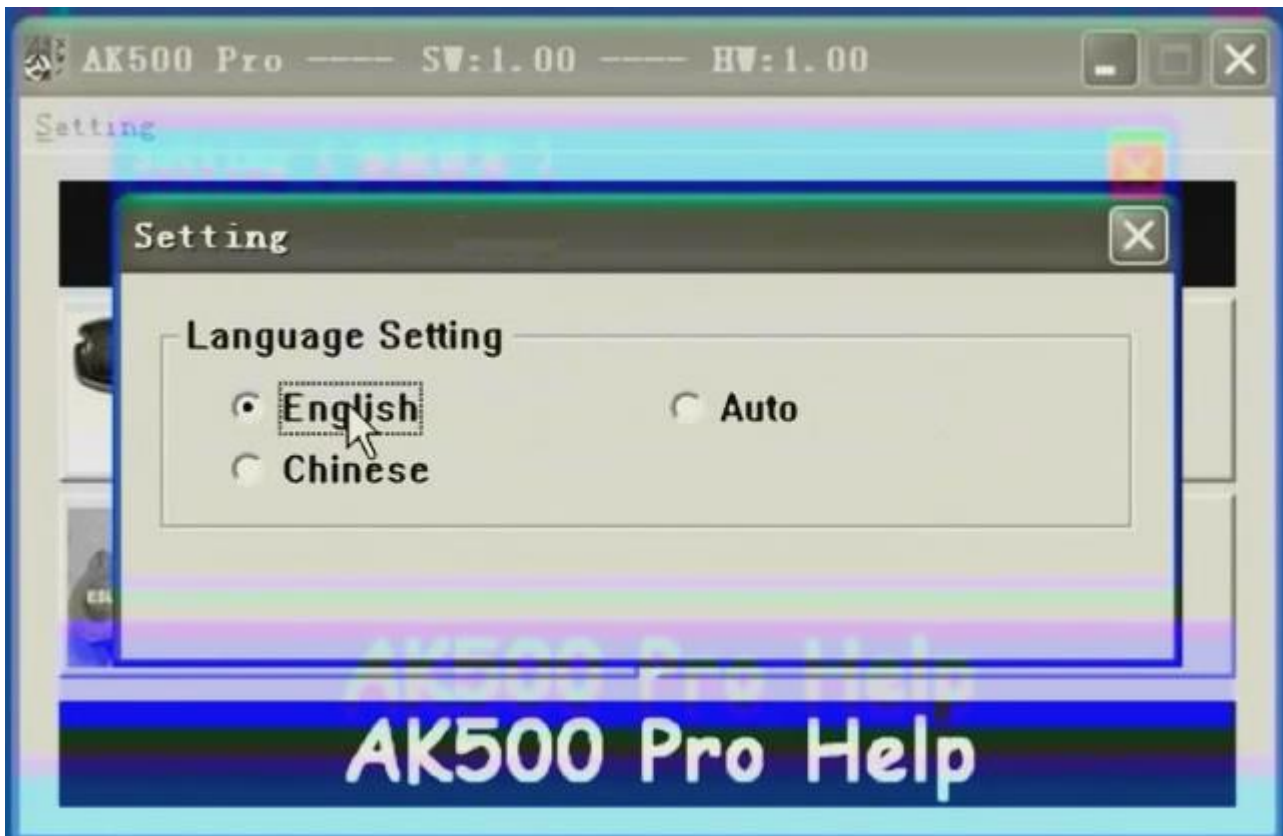
AK500Pro VS AK500, Buy AK500Pro or AK500

AK500	AK500Pro
Read and write EIS: HC705/HC908/HC912/9S12	Read and write EIS: HC705/HC908/HC912/9S12
No Benz original factory key calculator	With Benz original factory key calculator
Need to remove ESL/ESM/ECU to synchronize data	Support calculating key only need EIS data, no need to remove ESL/ESM/ECU
Doesn't support infrared write old model big key (Motorola CPU)	Support infrared write old model big key (Motorola CPU)
Support programming infrared key for Mercedes Benz 1998 to 2005	Support programming infrared key for all Mercedes Benz 1998 to 2011
Doesn't support EGS which is 722.9 type of gearbox computer	Support EGS which is 722.9 type of gearbox computer
Doesn't support programming key for W203/W211 with ECU flash 29F400 and 29F800	Support programming key for W203/W211 with ECU flash 29F400 and 29F800
Doesn't support Benz read and write "Key-less go" Key	Support Benz read and write "Key-less go" Key
Need 32G database to support ESL fast unlocks	Support ESL fast unlocks no need 32G database

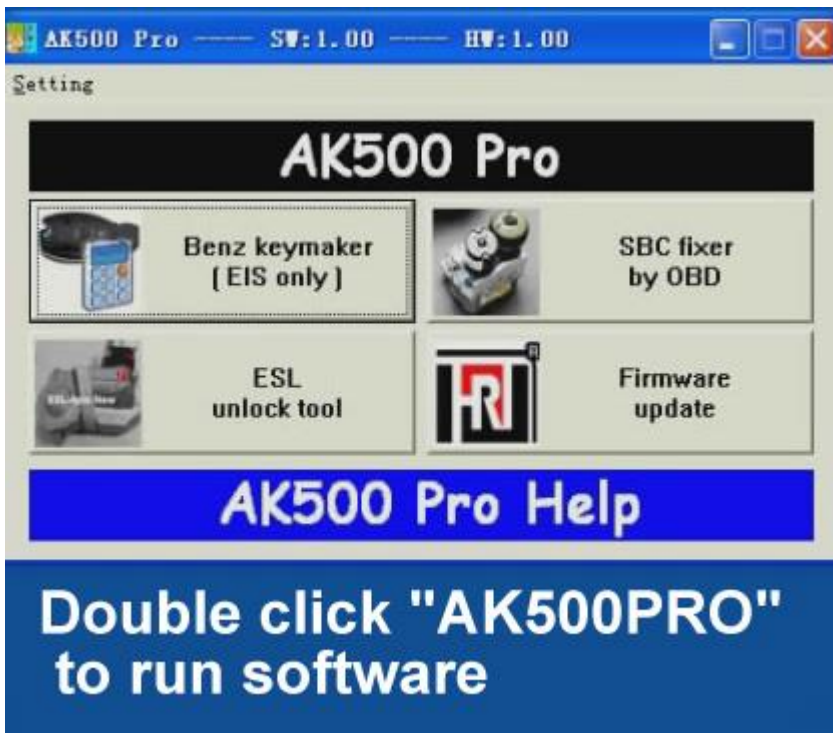
Support SBC computer reset, doesn't support through OBD read and write SBC EEPROM	Support SBC computer reset,support through OBD read and write SBC EEPROM

Some important AK500PRO Operation Display:

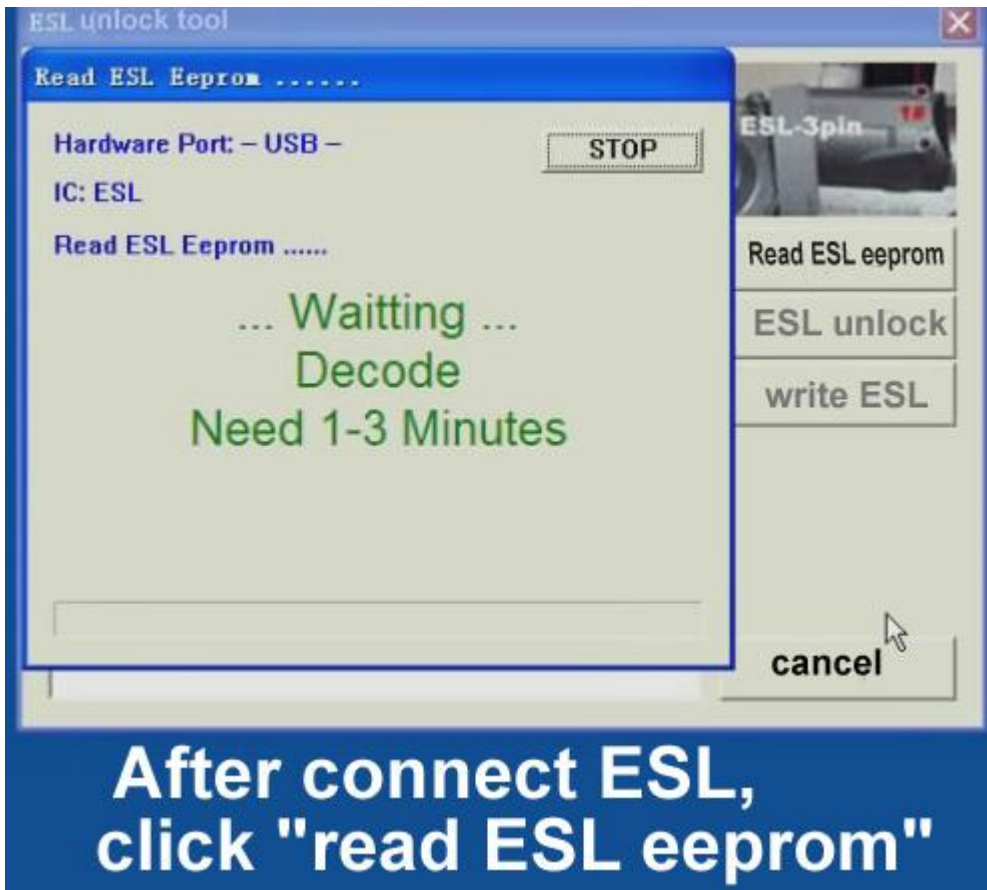




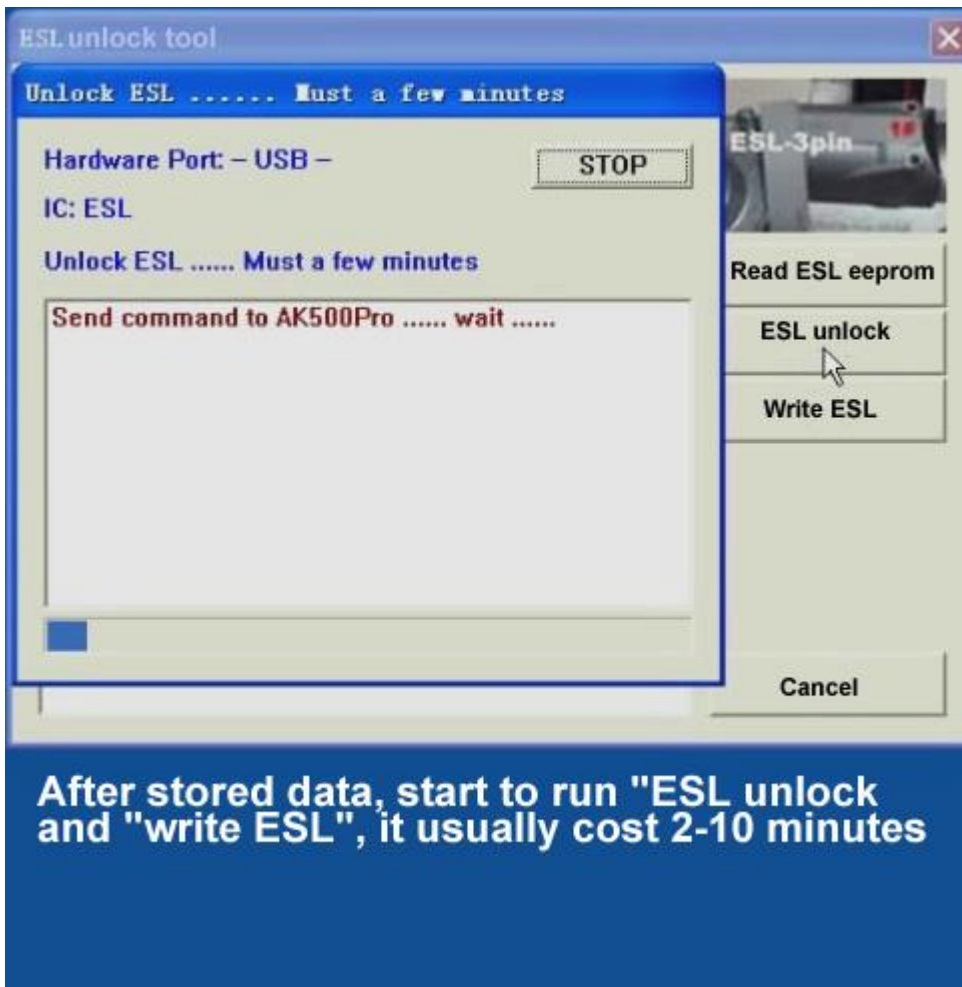
AK500 function menu:



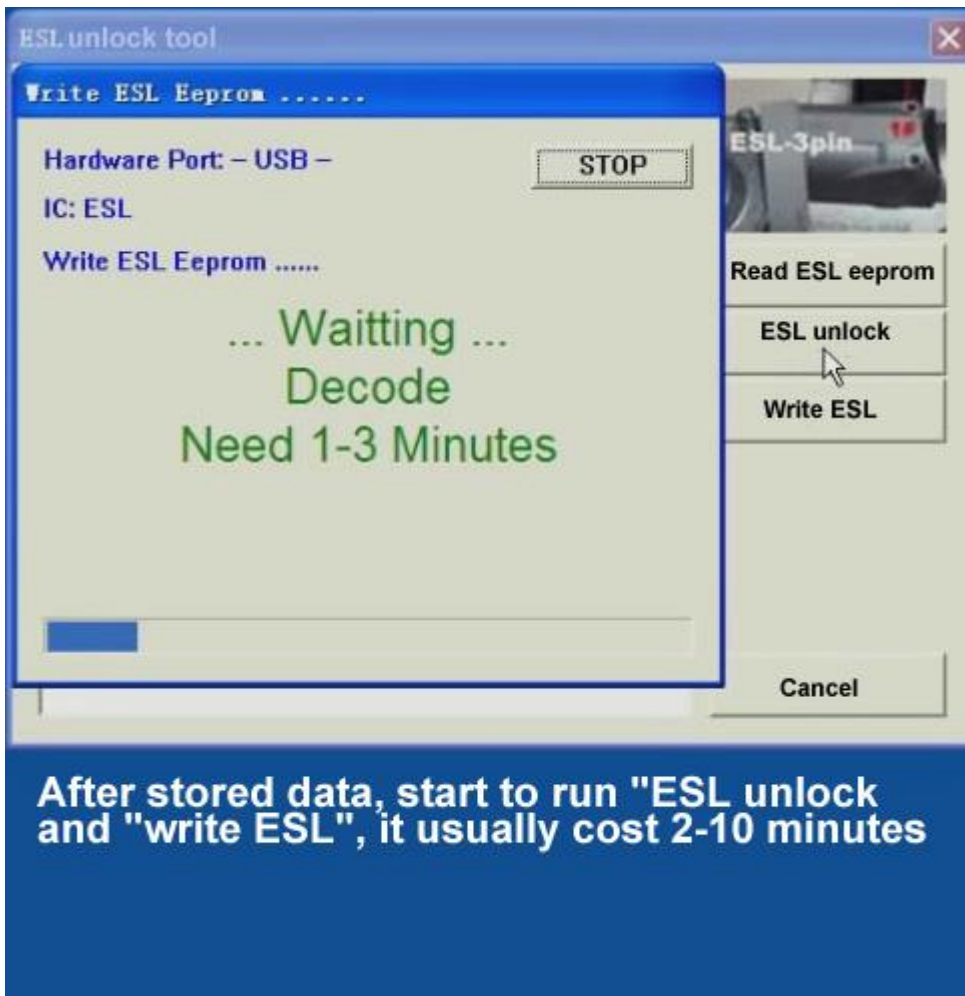
Read ESL eeprom



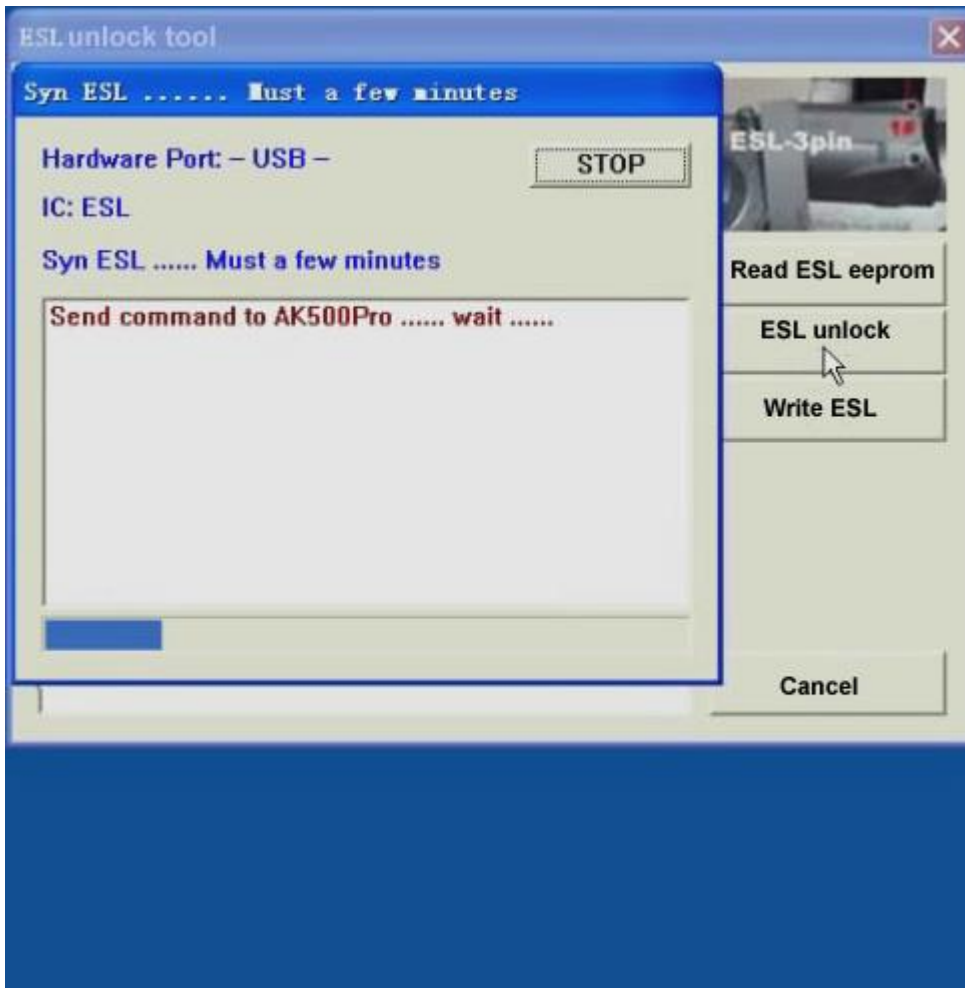
unlock ESL



Write ESL eeprom



Syn ESL



Read EIS Data

The screenshot displays the 'Benz infrared key match' software interface on a Windows desktop. The interface is divided into several sections:

- deal with ESL data:** This section contains two main buttons: 'read EIS data' (with a blue 'M' logo) and 'key calculator' (with a calculator icon). A mouse cursor is positioned over the 'read EIS data' button.
- write key:** This section contains a 'Write Key' button (with a purple '2' and 'Write Key' text) and a 'write' button.
- key and EIS(ESL) synchronization function:** This section contains a 'Test EIS+ESL+key' button.

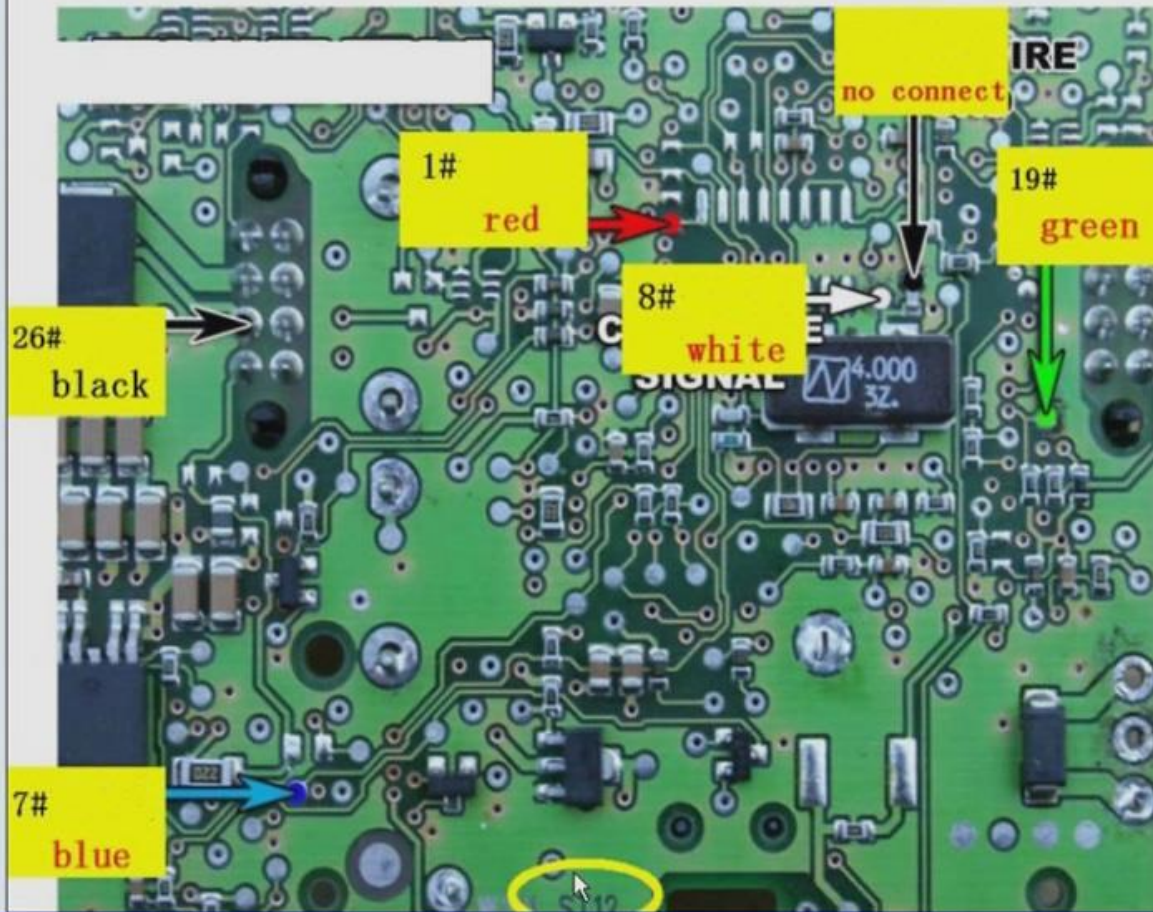
A central diagram illustrates the data flow between a computer and a key. A red arrow labeled 'EIS' points from the computer to the key, and a green arrow labeled 'ESL' points from the key back to the computer. The key has a logo with the letters 'RI'.

The desktop background is blue, and the taskbar at the bottom shows the 'start' button, system tray icons, and the time '16:01'.

Step 1: Read EIS data

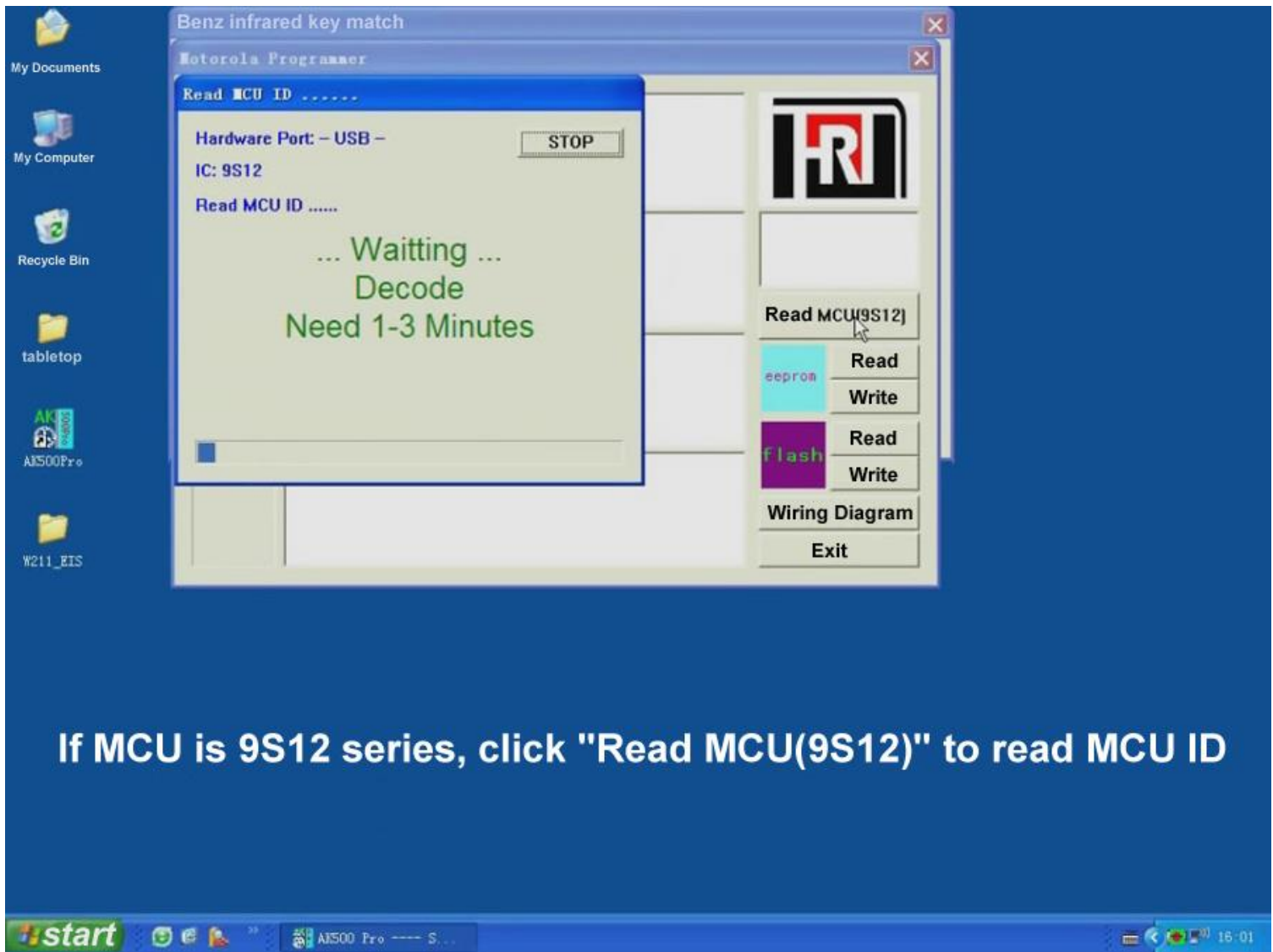
Wiring Diagram

W211-EIS (9S12)



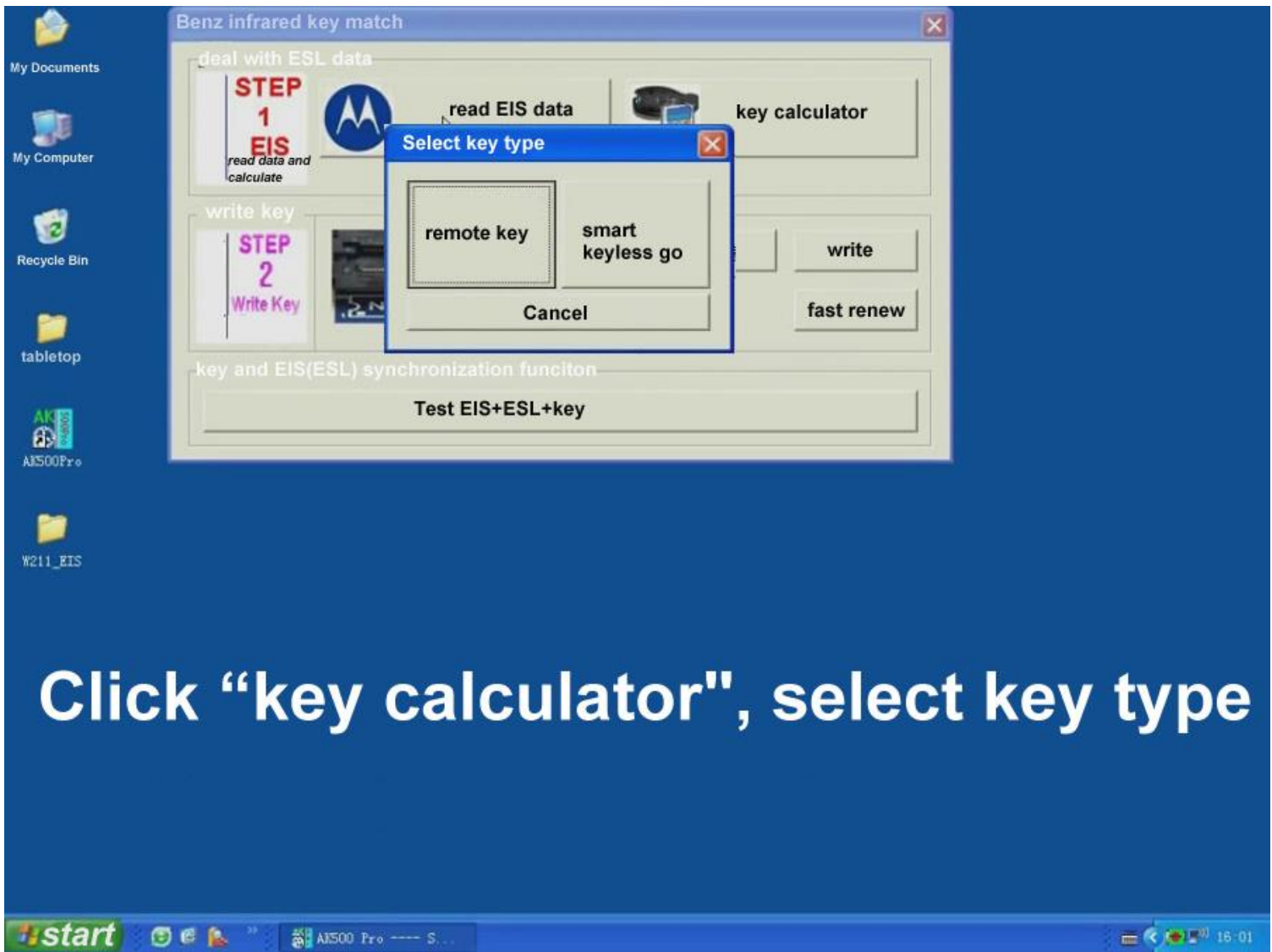
This is W211_EIS (9S12) wiring diagram

Read MCU ID



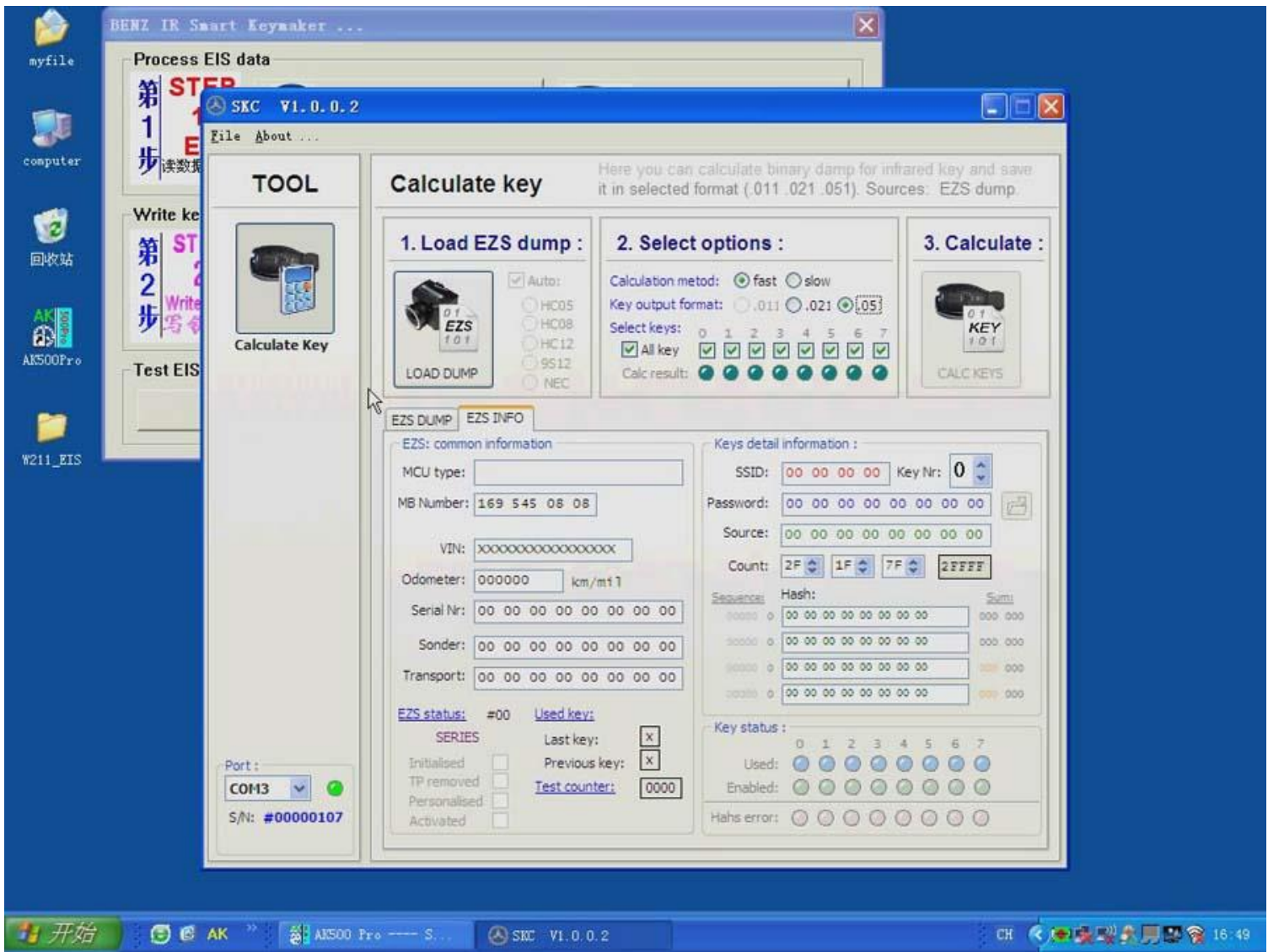
If MCU is 9S12 series, click "Read MCU(9S12)" to read MCU ID

Key Calculator

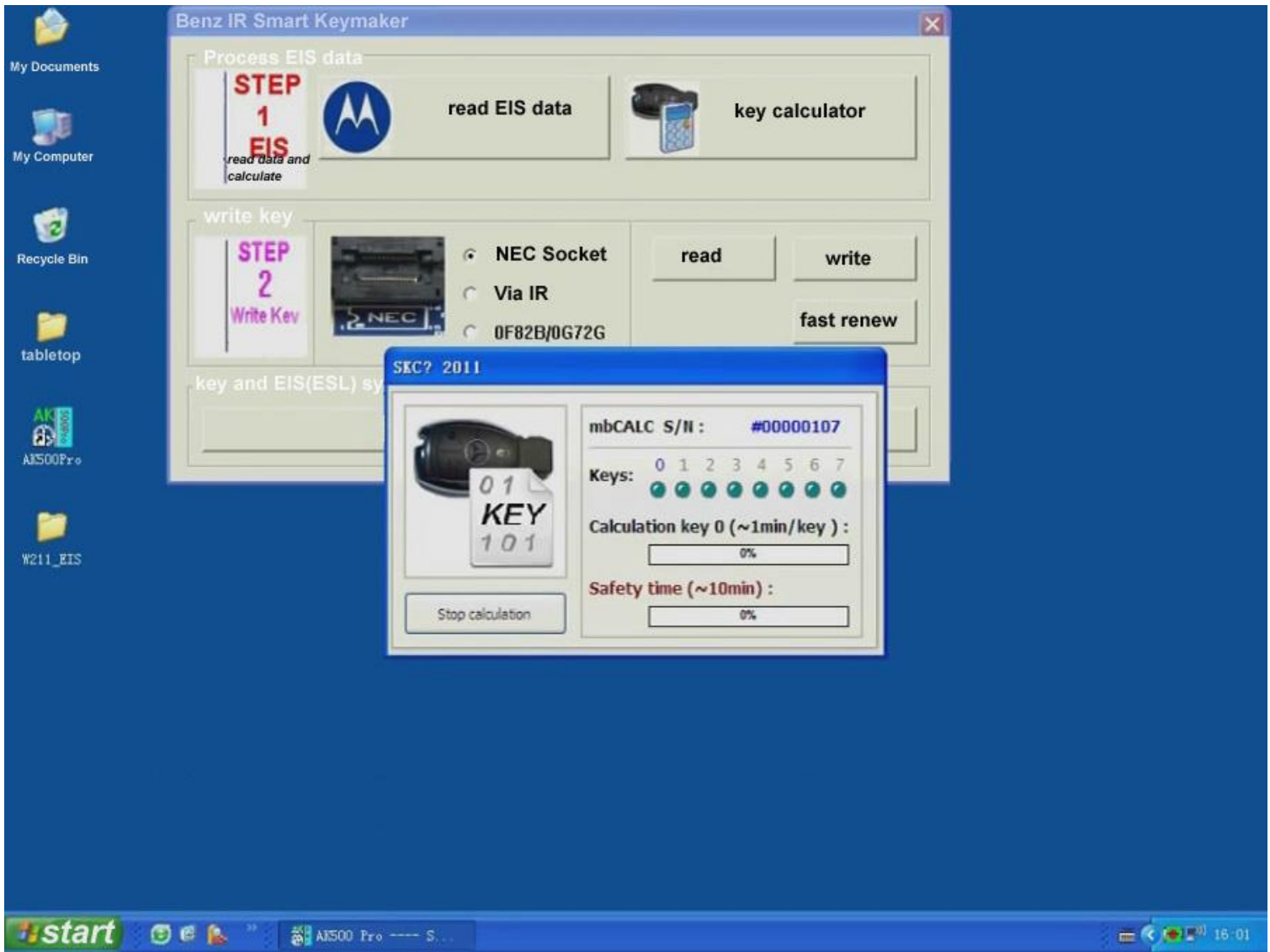


Click "key calculator", select key type

Calculate Key



Mercedes Benz IR key maker calculating key



Product parameters:

Online Communication Interface: USB2.

Power Specifications: AC Input 100-240V, 50/60HZ; output 12V/2A DC power consumption: 40W